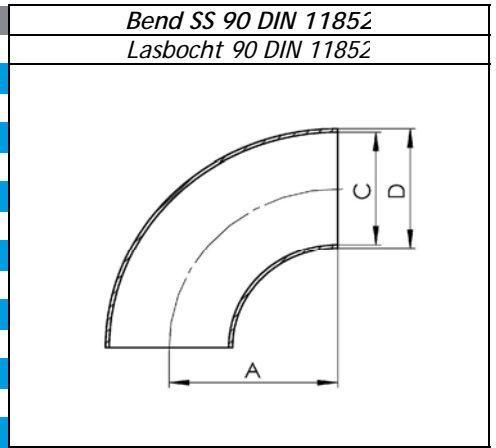
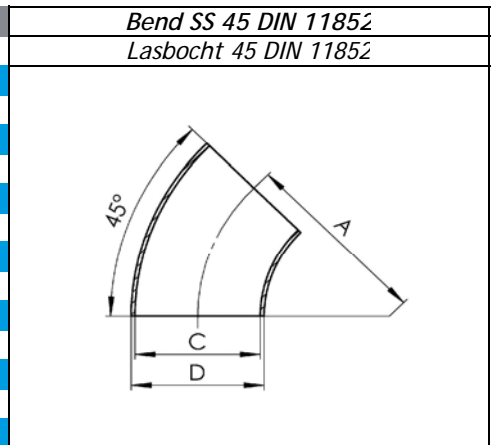


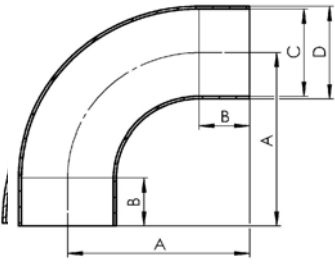
NW	A	B	C	D	E
10	26		9	12	
10	26		10	13	
15	35		15	18	
15	35		16	19	
20	40		19	22	
20	40		20	23	
25	50		25	28	
25	50		26	29	
32	55		31	34	
32	55		32	35	
40	60		37	40	
40	60		38	41	
50	70		49	52	
50	70		50	53	
65	80		66	70	
80	90		81	85	
100	100		100	104	
125	187,5		125	129	
150	225		150	154	
200	300		200	204	



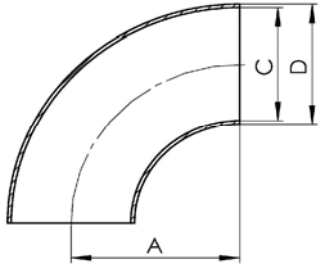
NW	A	B	C	D	E
10	26		9	12	
10	26		10	13	
15	35		15	18	
15	35		16	19	
20	40		19	22	
20	40		20	23	
25	50		25	28	
25	50		26	29	
32	55		31	34	
32	55		32	35	
40	60		37	40	
40	60		38	41	
50	70		49	52	
50	70		50	53	
65	80		66	70	
80	90		81	85	
100	100		100	104	
125	187,5		125	129	
150	225		150	154	
200	300		200	204	



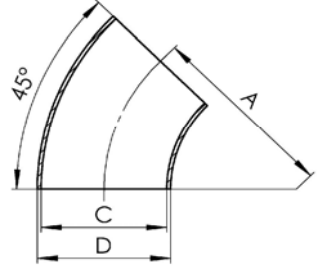
Expanding Bend 90 DIN 11852 <i>Walsbocht 90 DIN 11852</i>	NW	A	B	C	D	E
	10	38	25	9/10	12/13	
	15	47	25	15/16	18/19	
	20	52	25	19/20	22/23	
	25	65	25	25/26	28/29	
	32	78	25	31/32	34/35	
	40	85	25	37/38	40/41	
	50	97	25	49/50	52/53	
	65	110	25	66	70	
	80	123	55	81	85	
	100	140	55	100	104	



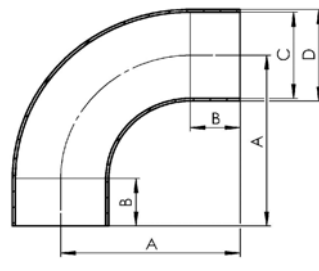
Bend 90 SMS <i>Lasbocht 90 SMS</i>	NW	A	B	C	D	E
	1"	38		22,6	25	
	1,25"	48		28,8	32	
	1,5"	57		34,8	38	
	2"	76		47,8	51	
	2,5"	95		60,3	63,5	
	3"	114		72,8	76	
	4"	152		97,6	101,6	



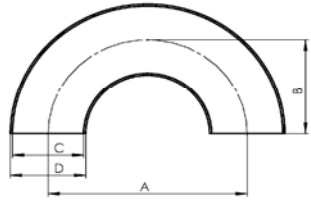
Bend 45 SMS <i>Bocht 45 SMS</i>	NW	A	B	C	D	E
	1"	38		22,6	25	
	1,25"	48		28,8	32	
	1,5"	57		34,8	38	
	2"	76		47,8	51	
	2,5"	95		60,3	63,5	
	3"	114		72,8	76	
	4"	152		97,6	101,6	



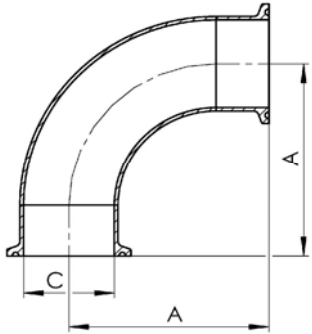
Expanding Bend 90 SMS <i>Walsbocht 90 SMS</i>	NW	A	B	C	D	E
	1"	65	26,1	22,6	25	
	1,5"	85	27,8	34,8	38	
	2"	110	33,8	47,8	51	
	2,5"	135	30	60,3	63,5	
	3"	155	45	72,8	76	
	4"	195	40	97,6	101,6	



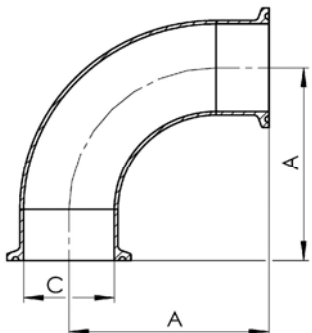
NW	A	B	C	D	E
<i>Bend SS 180 DIN 11852</i>					
<i>Lasbocht 180 DIN 11852</i>					
10	52	26	9	12	
15	70	35	15	18	
20	80	40	19	22	
25	100	50	25	28	
32	110	55	31	34	
40	120	60	37	40	
50	140	70	49	52	
65	160	80	66	70	
80	180	90	81	85	
100	200	100	100	104	
125	375	187,5	125	129	



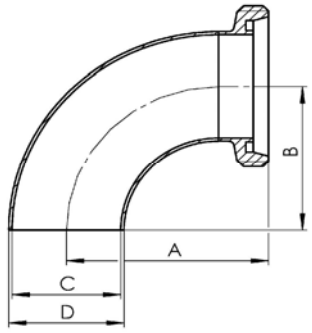
NW	A	B	C	D	E
<i>Bend 90 32676 DIN</i>					
<i>Bocht 90 32676 DIN</i>					
10	44		10		
15	53		16		
20	58		20		
25	63		26		
32	68		32		
40	73		38		
50	83		50		
65	93		66		
80	103		81		
100	113		100		

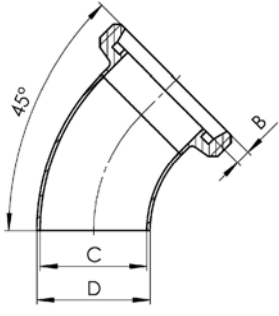


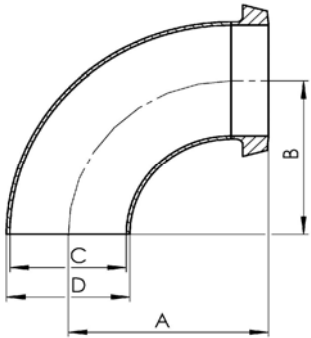
NW	A	B	C	D	E
<i>Bend 90 32676 Inch</i>					
<i>Bocht 90 32676 Duims</i>					
1"	50,8		22,2		
1,5"	69,9		34,9		
2"	88,9		47,6		
2,5"	108		60,3		
3"	127		73		
4"	168,2		97,6		

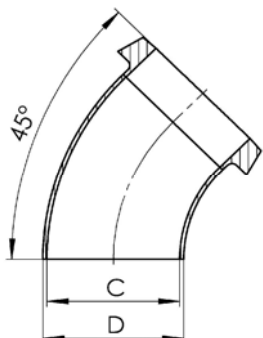


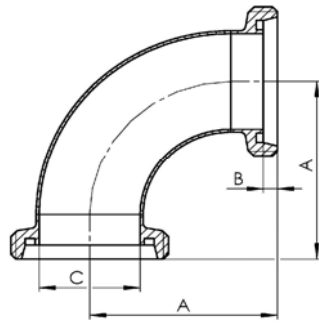
NW	A	B	C	D	E
<i>Bend 90 DIN 11851 weld/male</i>					
<i>Bocht 90 DIN 11851 las/draag</i>					
10	43	26	10	13	
15	52	35	16	19	
20	59	40	20	23	
25	72	50	26	29	
32	77	55	32	35	
40	82	60	38	41	
50	93	70	50	53	
65	105	80	66	70	
80	115	90	81	85	
100	130	100	100	104	



<i>Bend 45 DIN 11851 weld/male</i> <i>Bocht 45 DIN 11851 las/draaa</i>	NW	A	B	C	D	E
	10		4	10	13	
	15		4	16	19	
	20		6	20	23	
	25		7	26	29	
	32		7	32	35	
	40		7	38	41	
	50		7	50	53	
	65		8	66	70	
	80		8	81	85	
	100		10	100	104	

<i>Bend 90 DIN 11851 weld/liner</i> <i>Bocht 90 DIN 11851 las/punt</i>	NW	A	B	C	D	E
	10	39	26	10	13	
	15	48	35	16	19	
	20	53	40	20	23	
	25	65	50	26	29	
	32	70	55	32	35	
	40	75	60	38	41	
	50	86	70	50	53	
	65	97	80	66	70	
	80	107	90	81	85	
	100	120	100	100	104	

<i>Bend 45 DIN 11851 weld/liner</i> <i>Bocht 45 DIN 11851 las/punt</i>	NW	A	B	C	D	E
	10			10	13	
	15			16	19	
	20			20	23	
	25			26	29	
	32			32	35	
	40			38	41	
	50			50	53	
	65			66	70	
	80			81	85	
	100			100	104	

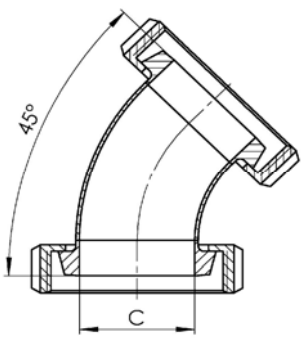
<i>Bend 90 DIN 11851 male/male</i> <i>Bocht 90 DIN 11851 draad/draaa</i>	NW	A	B	C	D	E
	10	43	4	9		
	15	52	4	15		
	20	59	6	19		
	25	72	7	25		
	32	77	7	31		
	40	82	7	37		
	50	93	7	49		
	65	105	8	66		
	80	115	8	81		
	100	130	10	100		

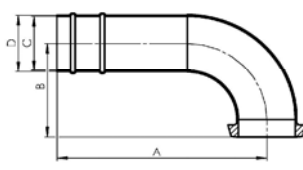
NW	A	B	C	D	E	
						<i>Bend 45 DIN 11851 male/male</i> <i>Bocht 45 DIN 11851 draad/draao</i>
10		4	9			
15		4	15			
20		6	19			
25		7	25			
32		7	31			
40		7	37			
50		7	49			
65		8	66			
80		8	81			
100		10	100			

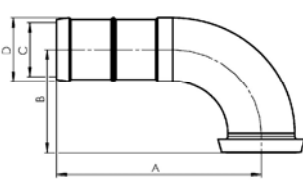
NW	A	B	C	D	E	
						<i>Bend 90 DIN 11851 male/liner</i> <i>Bocht 90 DIN 11851 draad/punt</i>
10	39	43	9			
15	48	52	15			
20	53	59	19			
25	65	72	25			
32	70	77	31			
40	75	82	37			
50	86	93	49			
65	97	105	66			
80	107	115	81			
100	120	130	100			

NW	A	B	C	D	E	
						<i>Bend 45 DIN 11851 male/liner</i> <i>Bocht 45 DIN 11851 draad/punt</i>
10		4	9			
15		4	15			
20		6	19			
25		7	25			
32		7	31			
40		7	37			
50		7	49			
65		8	66			
80		8	81			
100		10	100			

NW	A	B	C	D	E	
						<i>Bend 90 DIN 11851 liner/liner</i> <i>Bocht 90 DIN 11851 punt/punt</i>
10	39		10			
15	48		16			
20	53		20			
25	65		26			
32	70		32			
40	75		38			
50	86		50			
65	97		66			
80	107		81			
100	120		100			

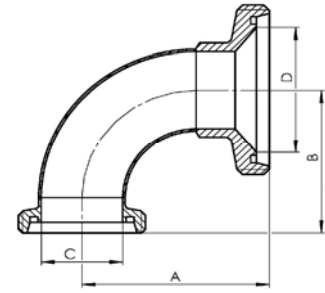
<i>Bend 45 DIN 11851 liner/liner</i> <i>Bocht 45 DIN 11851 punt/punt</i>	NW	A	B	C	D	E
	10			10		
	15			16		
	20			20		
	25			26		
	32			32		
	40			38		
	50			50		
	65			66		
	80			81		
100			100			

<i>Bend 90 DIN 11851 with nozzle</i> <i>Bocht 90DIN 11851 met buistule</i>	NW	A	B	C	D	E
	25	125	65	26	28	
	32	140	70	32	34	
	40	160	75	38	40	
	50	185	86	50	52	
	65	205	97	66	70	

<i>Bend 90 DIN 11851 with beer nozzle</i> <i>Bocht 90 DIN 11851 met biertule</i>	NW	A	B	C	D	E
	25	108	65	26	32	
	32	120	70	32	40	
	40	139	75	38	48	
	50	162	86	50	58	
	65	188	97	66	76	
	80	213	107	81	90	
	100	236	120	100	110	

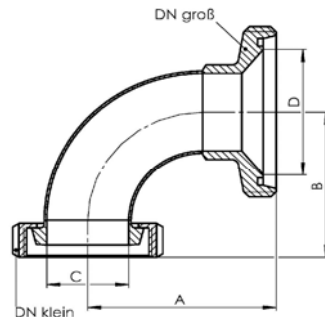
NW	A	B	C	D	E
25/10	55	43	10	26	
25/15	64	52	16	26	
25/20	67	59	20	26	
32/10	55	43	10	32	
32/15	64	52	16	32	
32/20	69	59	20	32	
32/25	81	72	26	32	
40/15	55	52	16	38	
40/20	69	59	20	38	
40/25	78	72	26	38	
40/32	87	77	32	38	
50/20	69	59	20	50	
50/25	76	72	26	50	
50/32	84	77	32	50	
50/40	93	82	38	50	
65/25	84	72	26	66	
65/32	94	77	32	66	
65/40	99	82	35	66	
65/50	108	93	50	66	
80/32	96	77	38	81	
80/40	103	82	38	81	
80/50	115	93	50	81	
80/65	123	105	66	81	
100/50	119	93	50	100	
100/65	129	105	66	100	
100/80	141	115	81	100	

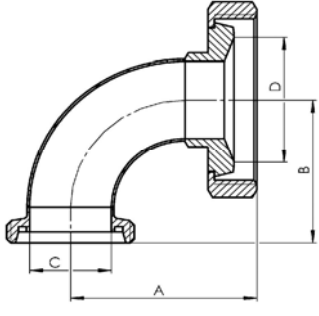
Reducing bend 90 DIN 11851 male/male
Verloop bocht 90 DIN 11851 draad/draac

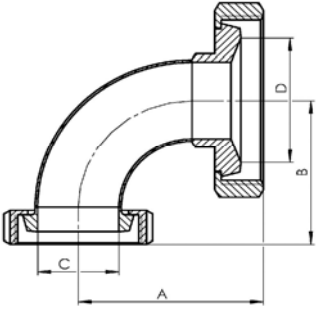


NW	A	B	C	D	E
25/10	55	39	10	26	
25/15	64	48	16	26	
25/20	67	53	20	26	
32/10	55	39	10	32	
32/15	64	48	16	32	
32/20	69	53	20	32	
32/25	81	65	26	32	
40/15	55	48	16	38	
40/20	69	53	20	38	
40/25	78	65	26	38	
40/32	87	70	32	38	
50/20	69	53	20	50	
50/25	76	65	26	50	
50/32	84	70	32	50	
50/40	93	75	38	50	
65/25	84	65	26	66	
65/32	94	70	32	66	
65/40	99	75	35	66	
65/50	108	86	50	66	
80/32	96	70	38	81	
80/40	103	75	38	81	
80/50	115	86	50	81	
80/65	123	97	66	81	
100/50	119	86	50	100	
100/65	129	97	66	100	
100/80	141	107	81	100	

Reducing bend 90 DIN 11851 liner/male
Verloop bocht 90 DIN 11851 punt/draac



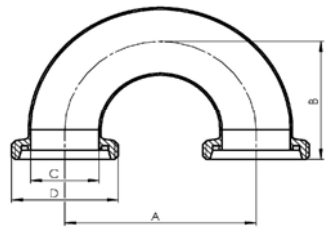
<i>Reducing bend 90 DIN 11851 male/liner</i> <i>Verloop bocht 90 DIN 11851 draad/punt</i>	NW	A	B	C	D	E
	25/10	48	43	10	26	
	25/15	57	52	16	26	
	25/20	60	59	20	26	
	32/10	51	43	10	32	
	32/15	58	52	16	32	
	32/20	63	59	20	32	
	32/25	74	72	26	32	
	40/15	60	52	16	38	
	40/20	65	59	20	38	
	40/25	74	72	26	38	
	40/32	79	77	32	38	
	50/25	78	72	26	50	
	50/32	78	77	32	50	
	50/40	86	82	38	50	
	65/25	82	72	26	66	
	65/32	87	77	32	66	
	65/40	86	82	35	66	
	65/50	100	93	50	66	
	80/32	90	77	38	81	
	80/40	96	82	38	81	
80/50	100	93	50	81		
80/65	115	105	66	81		
100/50	110	93	50	100		
100/65	120	105	66	100		
100/80	132	115	81	100		

<i>reducing bend 90 DIN 11851 liner/liner</i> <i>Verloop bocht 90 DIN 11851 punt/punt</i>	NW	A	B	C	D	E
	25/10	48	39	10	26	
	25/15	57	48	16	26	
	25/20	60	53	20	26	
	32/10	51	39	10	32	
	32/15	58	48	16	32	
	32/20	63	53	20	32	
	32/25	74	65	26	32	
	40/15	60	48	16	38	
	40/20	65	53	20	38	
	40/25	74	65	26	38	
	40/32	79	70	32	38	
	50/25	78	65	26	50	
	50/32	78	70	32	50	
	50/40	86	75	38	50	
	65/25	82	65	26	66	
	65/32	87	70	32	66	
	65/40	86	75	35	66	
	65/50	100	86	50	66	
	80/32	90	70	38	81	
	80/40	96	75	38	81	
80/50	100	86	50	81		
80/65	115	97	66	81		
100/50	110	86	50	100		
100/65	120	97	66	100		
100/80	132	107	81	100		

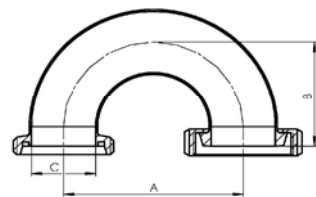
NW	A	B	C	D	E		
						Bend 90 thermo DIN 11851	
						<i>Thermometer bocht 90 DIN 11851</i>	
25	50		26	72			
32	55		32	78			
40	60		38	84			
50	70		50	96			
65	80		66	113			
80	90		81	127			
100	100		100	144			
Connection R 1/2" BSP							

NW	A	B	C	D	E		
						Bend 90 thermo DIN 11851 male/liner	
						<i>Thermom. Bocht90 DIN 11851 draad/punt</i>	
25	65	72	26	87	Rd 52x1/6"		
32	70	77	32	93	Rd 58x1/6"		
40	75	82	38	99	Rd 65x1/6"		
50	86	93	50	112	Rd 78x1/6"		
65	97	105	66	130	Rd 95x1/6"		
80	107	115	81	144	Rd110x1/4"		
100	120	130	100	164	Rd130x1/4"		
Connection R 1/2" BSP							

<i>Bend 180 DIN 11851 male/male</i> <i>Bocht 180 DIN 11851 draad/draad</i>	NW	A	B	C	D	E
	10	52	43	10		
	15	70	52	16		
	20	80	59	20		
	25	100	72	26		
	32	110	77	32		
	40	120	82	38		
	50	140	93	50		
	65	160	105	66		
	80	180	115	81		
	100	200	130	100		



<i>Bend 180 DIN 11851 male/liner</i> <i>Bocht 180 DIN 11851 draad/punt</i>	NW	A	B	C	D	E
	10	52	39	10		
	15	70	48	16		
	20	80	53	20		
	25	100	65	26		
	32	110	70	32		
	40	120	75	38		
	50	140	86	50		
	65	160	97	66		
	80	180	107	81		
	100	200	120	100		



<i>Bend 180 DIN 11851 liner/liner</i> <i>Bocht 180 DIN 11851 punt/punt</i>	NW	A	B	C	D	E
	10	52	39	10		
	15	70	48	16		
	20	80	53	20		
	25	100	65	26		
	32	110	70	32		
	40	120	75	38		
	50	140	86	50		
	65	160	97	66		
	80	180	107	81		
	100	200	120	100		

